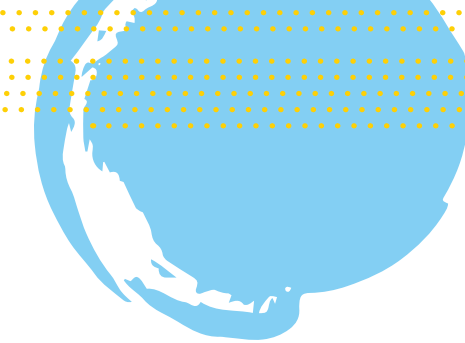




CONNECTIONS

LAGRANGE COUNTY COMMUNITY FOUNDATION
2019 ANNUAL REPORT



CONNECTION IS OUR STRENGTH

Living in a small community, it's not uncommon to recognize a familiar face or to run into a distant relative. In our office, when we meet new people we often joke that we should get out the family tree to see if we're not related. When you meet someone new in LaGrange County, the question you often hear is: "What high school did you attend?" It's a question that helps connect us to familiarity. The strength of living in tight-knit communities are the connections we build with each other. The connections are strengths; neighbors seeking to help each other. People who are willing to help lend a hand.

Despite all our connections, we can create silos without realizing. It's good to break out and create new partnerships. That's why we're here. The Community Foundation seeks to bridge communities and people. From Topeka to Stroh to Howe and Wolcottville to LaGrange and Shipshewana and South Milford, we're here for all of LaGrange County.

The Community Foundation values the connections we've made with donors, grantees and community partners. We recognize the power of community philanthropy and what can happen when a generous community gives. We seek to be a conduit and connect donors to the remarkable work being done in our community.

Our approach at the Community Foundation is three-fold: Community Leadership, Grantmaking

and Building Endowments. As a community leader, we want to continue to ask the questions: "What can the Foundation do to help move our community forward?" What partnerships can we help encourage?" Our focus in grantmaking is to make strategic investments, to help fund projects that help solve community problems, fulfill a need, or to provide a benefit to our community. We focus on building permanent endowments so our community will have funds long into the future. We can't see 20 years in the future, but we can prepare.

We had a remarkable year at the Community Foundation due to your generosity. We received a total of \$854,394 in the Fiscal Year 2019. Because of past giving and investment, we were able to award \$456,654 in grants.

We believed in the vision of the LaGrange County Trails, Inc. and made an initial investment (\$25,000) to support the group's plan to construct a pedestrian trail in Topeka. We saw the drive and determination of the Town of LaGrange's Park Committee to provide an inclusive play area for children of all abilities (\$20,000) and bring a splash pad to help unite families. We were thrilled to see the continued development of the Duff Lake Fen at Pine Knob Park (\$15,000) and eagerly anticipate the completion of the boardwalk so all can see the beauty hidden in Howe.

It was a momentous year in LaGrange County. So much of the work in our county cannot be done

without exceptional organizations who care for the betterment of LaGrange County. You are our partners in improving the quality of life in our county. From nonprofits to volunteer community groups, we have an array of people who care.

Lilly Endowment Inc. continues to help LaGrange County and other communities thrive with generous gifts. The Giving Indiana Funds for Tomorrow (GIFT) grants will help us continue to grow. Part of the GIFT funds helped us identify the vision and needs in our community and allowed us to embark on the *Envision LaGrange County* project. We invited you to share your vision for the future. You talked, we listened.

We are excited to open the doors to our new facility in LaGrange. We anticipate being in the new facility by early 2021. We never know who will stop in our space and connect, but we're thrilled to be a part of this community and connect people to philanthropy.

With gratitude,

Neal Wolhuter *Octavia Yoder*

Neal Wolhuter
Board President

Octavia Yoder
Executive Director



RESTORING DUFF LAKE FEN

LaGrange County Parks Department crews, along with Blue Heron Ministries, a nonprofit land restoration agency, have worked hard for the past five years restoring 100 acres of parkland to a natural fen, and soon, visitors will be able to experience the beauty of Duff Lake Fen at Pine Knob Park.

Pine Knob Park, with more than 220 acres, is the largest park in LaGrange County. After a delay, construction on the project began in late 2020 and will be completed by summer 2023. Previously used as farmland, the fen has been transformed from a series of pastures, wetlands and cornfields to upland prairies, oak savannahs, and a fen surrounding a small lake. Crews removed old drainage tiles and removed hundreds of invasive trees to return the land to what nature intended.

Duff Lake Fen houses rare and endangered species such as the Massasauga rattlesnake and the horned bladderwort, a

carnivorous plant found in bogs. A three-year project costing \$350,000, will include the development of 5,200 feet of limestone trail and approximately 4,000 feet of boardwalk through the fen and savannah areas, allowing visitors to explore the park safely. In addition to a shelter, benches, and a table, interpretive displays about the fen will be installed.

The Community Foundation awarded a \$15,000 Community Impact Grant to support the project. After a delay, construction on the project will begin in late fall 2020 and will be completed by summer 2023.

Once the project is complete Pine Knob Park will have an additional 9,200 feet of trails, allowing visitors to explore more of what the park has to offer.



“This park brings spark to the neighborhood and town.”

—BRITTANY COWLEY
TOWN OF LAGRANGE PARK COMMITTEE MEMBER



CREATING SPACE FOR EVERYONE

Town of LaGrange makes strides toward inclusive park

Playing in a town park provides memories for children and an outlet during summer, but what happens when some children are forced to the sidelines?

With outdated equipment and difficult accessibility, the LaGrange Town Park created challenges for many children with disabilities. A committee of concerned citizens recognized those challenges and dreamed of creating an inclusive park – with ADA compliant equipment.

The town established the LaGrange Park Committee, which included LaGrange community members and town council members to design a new park and spearhead fundraising efforts. LaGrange Clerk-Treasurer Laurie Miller, a leading advocate for a park update, said it had been more than 25 years since the park had been updated.

From their brainstorming sessions, the park committee sought to create an inclusive park with an added feature – a splash pad. With no community pool in LaGrange County – the splash pad would also serve as entertainment for kids all summer.

The group’s dream also came with a price tag of \$300,000. The town applied for a Community Impact Grant from the Foundation and received \$20,000, to help kick-start efforts on local fundraising.

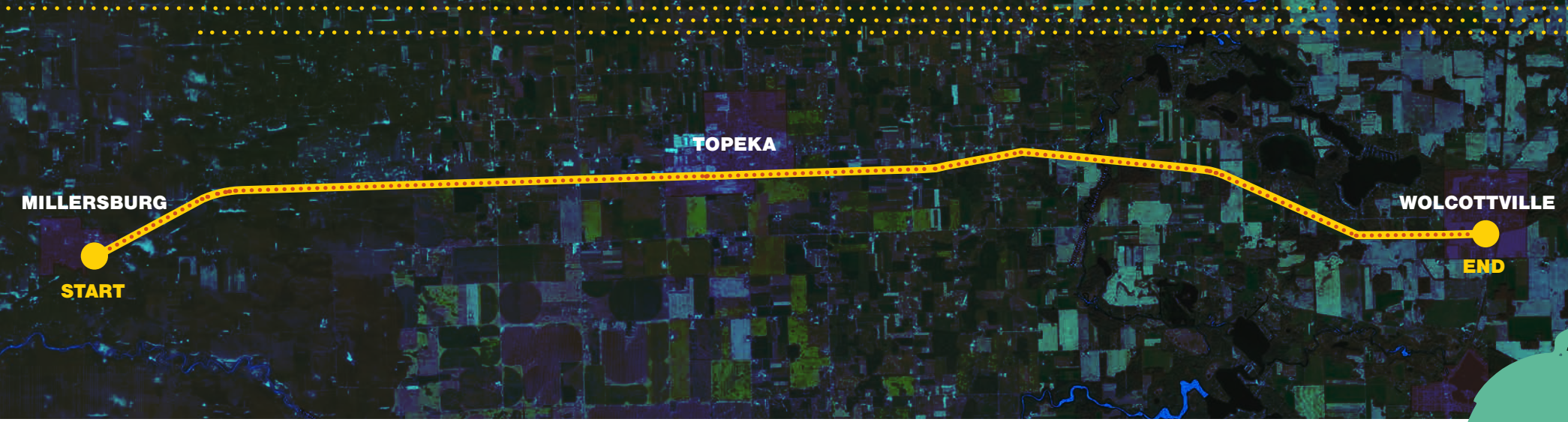
The town of LaGrange allocated funds from its annual budget, but the committee also needed additional funding and community support. In a matter of two months, the town raised \$50,000 through a crowd-funding grant from the Indiana Housing and Community Development Authority.

The support of local donors helped the town secure an additional \$50,000, for a total of \$100,000.

At the town park, kids of all ages and physical abilities are now welcome. Completed in September of 2020, the park also features a new pavilion for families to enjoy. The committee hopes to add lighting and safety fencing in 2021.

The splash pad will feature a dozen water fixtures that will spray a gentle stream of water at anyone who walks by. The splash pad will be ready for use in the spring of 2021.

“I am so excited that the new town park is coming to fruition,” said Brittany Cowley, a member of the Town of LaGrange Park Committee. “We really wanted a space that provides play opportunities for all kids and is unique enough to bring in visitors from surrounding towns.”



LAGRANGE COUNTY TRAILS: BRIDGING COMMUNITY AND NATURE

The remains of the Wabash Railroad meanders through a wide swath of farmland in Topeka, a reminder of a different time. The abandoned railway follows the path of County Road 300 South, linking Topeka to Millersburg in Elkhart County and to Wolcottville in the southern edge of LaGrange County. Hidden from most eyes, the railway is used by Amish families seeking safe passage for their children on otherwise busy county roads.

Now, with the help of LaGrange County Trails, the vision is to bring the old rail bed new life, and again connect the communities, this time creating a biking and walking trail called the “Hawpatch Trail.” In 2017, a visionary group of community

leaders sought to bring more bike trails to LaGrange County. They recognized a need for safe alternative routes for cyclists and pedestrians. They worked diligently to identify locations for new trails. The Hawpatch Trail is their catalyst project, with hopes that it spurs on continued pedestrian trail development.

For many, bicycles are a way of transportation, for others, recreation. Spurred by love of recreation and the desire to create safer spaces for the hundreds of cyclists that call LaGrange County home, the Hawpatch Trail will span 17 miles and connect multiple towns and three counties.

For the intrepid venture and vision, the Community Foundation awarded LaGrange County Trails a

\$25,000 Community Impact Grant. This supported the early stages of the group’s efforts: legal fees, title research, surveying and appraisals.

The Hawpatch Trail will be within two miles of three county parks and three town parks. The scenic route includes three bridges crossing over streams and rivers. The trail will provide a safe route for young Amish traveling to nearby schools, as well as everyday citizens using the trail for work or leisure travel. There is potential the Hawpatch Trail could eventually connect to neighboring counties, which could provide more than 100 miles of trails linking several cities, towns and neighborhoods. The Hawpatch Trail is a vital link to a regional plan.



“I am excited to be part of the Hawpatch Trail project. It is a great example of the English and Amish cooperating to benefit both our communities. The trail will provide safe transportation, recreation, and health benefits for the residents of our County.”

— JEFF WINGSTROM

PRESIDENT LAGRANGE COUNTY TRAILS



PLANNING FOR THE FUTURE: ENVISION LAGRANGE COUNTY

Where is LaGrange County headed? What's the vision for our future? Those are a few of the questions we sought to ask in 2019 as we spearheaded Envision LaGrange County, and embarked on a listening tour of the county.

At the end of 2018, Lilly Endowment announced its seventh phase of its Giving Indiana Funds for Tomorrow (GIFT VII) Initiative. The initiative included a focus on community leadership and a challenge to community foundations to address important community needs. Through GIFT VII, we received a \$50,000 Planning Grant to bolster our internal operations and lead Envision LaGrange County and ask the community – “What’s Important to You?”

The Foundation hosted five Community Conversations in October and November, seeking input from LaGrange County residents. Open to the public, the conversations provided an opportunity for residents to share their voice. We

listened as people shared their personal stories, what they hope to see in LaGrange County and what they believed to be the significant challenges facing us.

Among the most popular challenges were a need for more housing options, workforce and soft skill education in grades K-12, and a dramatic reduction of drug addiction and abuse. With these challenges came the envisioning of a brighter future for LaGrange County, including downtown revitalization in each town and community, the development and support of entrepreneurial spirit, hiking and biking trails, and a countywide community center with exercise and programming for youth and adults.

The project also unveiled the need for better community planning. After reviewing the community’s input, the project’s Steering Committee recommended the Foundation collaborate with county, town and community

leaders to create a new countywide comprehensive plan for all of LaGrange County. The last county planning effort took place in 2002. With the development of a new countywide plan it would help unite communities around a shared identify and future for LaGrange County.

“Planning is an important part of a community’s development – it helps us identify who we are and what we want to be. LaGrange County has a wealth of opportunities. Planning will help organizations, government leaders, and stakeholders focus on priorities to keep our community growing, thriving and competitive,” said Octavia Yoder, Foundation Executive Director.

The Foundation will use the data collected from Envision LaGrange County to inform funding decisions, make strategic decisions about grant investments and to support important community initiatives and needs.

6 COMMUNITY CONVERSATIONS
In towns across the county, with young leaders and Amish

200 + TOTAL ATTENDEES

“LaGrange County has the greatest parks department in the State.”

- RANDY FRY

Through these conversations, the following were identified as top opportunities and top challenges:

Top Opportunities:

- 1. Focus on downtown revitalization** in LaGrange and all communities in the county.
- 2. Develop and support entrepreneurial spirit** to create restaurants, brewpubs and boutique retail.
- 3. Biking/Hiking Trails** continue to develop trails for recreation and safer transportation for all.
- 4. Countywide community center** with programming and exercise for youth and adults.
- 5. Cultural collaboration between the Amish and Non-Amish cultures** focus on areas where there is an alignment of interest and shared benefit.
- 6. The county park system and the lakes** leverage the assets that everyone is most proud of.
- 7. LaGrange and Shipshewana** work together to leverage and complement the established tourism market in Shipshewana.
- 8. Strategic use of Redevelopment powers** strategic investment of tax increment finance (TIF) resources.

Top Challenges:

- 1. Need a housing strategy**, need housing of all types.
- 2. Eliminate drug abuse/addiction** and the systemic challenges that result.
- 3. Workforce education/job training/skill development in trades, soft skills** in K12, trade schools.
- 4. Improve traffic/road safety** to ensure the safe movement of citizens, visitors and commerce within the county.
- 5. Develop a “LaGrange County Brand”** focus on what makes us special, market our story. Residents are proud of County Parks, lakes, trails, natural environment, schools, Library, Parkview LaGrange, caring community, strong cultural heritage.
- 6. Leadership development**, progressive leadership to engage young people and be more accepting of new ideas.
- 7. Access to affordable childcare and early childhood education.**
- 8. Update LaGrange County website** to strengthen countywide communication.
- 9. Improve public transportation** to strengthen access to services and employment, especially after 5:00pm.
- 10. Comprehensive community planning and visioning**, locally controlled decisions for planned growth.
- 11. Work together to develop shared goals**, focus on civic engagement and collaboration versus what divides us.

FUNDS

New 2019 Funds

Allread-Rife Family Scholarship

The Allread-Rife Family Scholarship supports two graduating LaGrange County seniors who intend to pursue a degree and career in nursing and teaching. It honors Sandra Allread, a longtime English teacher at East Noble School Corporation.

Beverly J. Todd Memorial Scholarship

Beverly J. Todd Memorial Scholarship was established in memory of Prairie Heights Elementary teacher Beverly Todd. She retired from education after spending 38 years teaching elementary education for Prairie Heights School Corporation.

Community Funds (Unrestricted):

Donors who establish Community Funds, also called “Unrestricted Funds” understand these funds are key to the Community Foundation’s ability to meet emerging needs. Community Funds provide flexible resources to address the needs and opportunities of our beloved communities as they change over time. Income from these funds is granted in response to grant applications from area nonprofit organizations. The Board of Directors can also direct funds to be used for specific Foundation initiatives and desired community outcomes.

Caring Community Grant Making Fund

Dale Sturtz Memorial Fund

Education Fund

Founders Community Fund

Knights of Pythias LaGrange Lodge No. 144 Fund

Lambright Charitable Unrestricted Fund

McKenzie Family Fund

R. E. Lee Family Fund

Sharp Family Fund

Stanley “Chip” Krugh Memorial Fund

Willard Family Community Fund

Agency Funds:

Agency Funds are created by a nonprofit organization to provide a stream of income for their organization.

LaGrange Communities Youth Center Agency Fund

Northeastern Center Agency Fund

Questa Education Foundation Scott Cemetery Fund

Topeka Area Historical Society

Designated Funds:

Designated Funds benefit a specific nonprofit organization for as long as that organization is in existence and is fulfilling its intended purpose. Typically, a donor establishes a designated fund to benefit a favorite church or organization.

ACRES Nature Preservation & Education Fund

Brethren Retreat Ministries, Inc.

CAPE II Endowment Fund

Community Dental Clinic Fund

Delores McNett & Talmage Family Prairie Heights FFA Washington Leadership Conference Fund

Elijah Haven Fund

Emergency Relief Fund

Jack L. Stark Acres Property Fund

Junior Achievement of LaGrange County Fund

Kenny Burkett Health Fund

LaGrange County 4-H Association Fund

LaGrange County Amish School Fund

LaGrange County Council on Aging Program Fund

LaGrange County Public Library — Dekko Grant Fund

LaGrange County Public Library Fund

LaGrange County Endowment Fund

Lakeland School Corporation Fund

Lima United Methodist Church Fund

Menno-Hof Fund

Rainbow Years Learning Center Fund

Scott Cemetery Fund

Scott United Methodist Fund

Shed Endowment Fund

Topeka Civic Endowment Fund

United Fund of LaGrange County Endowment Fund

Pretzel Fund

Youth for Christ of Northern Indiana

Field of Interest Funds:

Field of Interest Funds specify that income from the fund is to support a donor’s particular area of concern, such as the arts, education, care of the elderly or environment without naming a specific organization to which grants will be made.

CenturyLink Economic Community Development Fund

Cultural Arts Council of LaGrange County, Inc. Fund

Good Samaritan Fund

Healthcare Foundation, Inc. Fund

LaGrange County Animal Welfare Fund

LaGrange County Promise

LaGrange County Senior Citizens Fund

LaGrange County Youth

Leadership Development Fund

LIFE Grants Fund

LIFE Operating Fund

Mentor Moms Program Fund

Quality Child Care Endowment Fund

Save the Wolcott House Fund

Shipshewana Community Fund

Stroh Community Fund

Operating Funds:

Operating Funds are the engines that keep the Community Foundation going. By contributing to these funds, you are helping the Foundation grow faster to improve the quality of life for all of LaGrange County. These funds support the day-to-day operations of the Community Foundation.

Capacity Building Fund

LCCF Operating Endowment

Cole Foundation Administrative Fund

Dekko Enhancement Fund

NIPSCO Fund – LCCF Operating

Community Project Funds:

Community Project Funds are temporary funds held at the LaGrange County Community Foundation for various projects and groups within LaGrange County. They provide an opportunity for LCCF to offer service and leadership to the community. The LaGrange County Community Foundation becomes the fiscal sponsor for the organization. Donations to these type of funds are eligible for a federal tax deduction.

College Success Coalition

Save the Wolcott House Fund

Council for Drug Free LaGrange County

LaGrange County Drug Court

LaGrange County Health Coalition

Friends of the LaGrange County Parks

Veterans Headstone Project

Scholarship Funds:

Scholarship Funds enable students to achieve their educational dreams. Individuals, families, organizations, or businesses often establish these funds.

Allread-Rife Family Scholarship

Amanda Lou Crofts Memorial Scholarship Fund

Beverly J. Todd Memorial Scholarship

Brian J. Evans Memorial Scholarship

Bruce Brown Memorial Scholarship Fund

Chase E. Scott Memorial Football Scholarship

Craig D. Neff & Ronda S. Neff Memorial Scholarship Fund

Ellsworth Fanning Memorial Scholarship Fund

Farmwald Scholarship Fund

Florence E. & Virgil L. Hardin Memorial Scholarship Fund

George O. Witwer News-Sun Journalism Scholarship Fund

Holly Petersen Memorial Science Scholarship Fund

Hope Nursing Scholarship Fund

James F. Kalb Memorial Scholarship Fund

J.O. Mory Company Scholarship Fund

Joseph J. Willard Memorial Scholarship Fund

Judy Gage Keenan Scholarship Fund

Keith & Arline Davis Scholarship Fund

Kerry Wilt-Spradlin Memorial Scholarship Fund

Kevin Lewis Purdue Agriculture Memorial Scholarship Fund

LaGrange County Farm Bureau Coop Scholarship

LaGrange County Lakes Council Scholarship Fund

Lakeland Scholarship Fund

Lambright Leadership Scholarship

LIFE Endowment Fund

Lyle Smith Discretionary Scholarship Fund

Mary E. McGawn Future Teacher Scholarship

Mattea Hope Holton Memorial Scholarship

Matthew Terry Memorial Scholarship Fund

Melvin & Marjorie Bricker Memorial Scholarship

Morgan Hunter Memorial Scholarship

Mory Family Scholarship Fund

Natalie Kauffman Nursing Scholarship Fund

Ned Stump Scholarship Fund

Olive B. Cole Foundation Scholarship Fund

Olivia Bay Lemings Scholarship Fund

Paul & Marian Krebs Scholarship Fund

Peggy Messer Memorial Scholarship Fund

Perkins Scholarship Fund

Prairie Heights Band Scholarship Fund

Prairie Heights Scholarship Fund

Prairie Heights Student Council Leadership Scholarship Fund

Ray and Ruth Culp Memorial Scholarship Fund

Rheinheimer Scholastic Fund

Russell Hepler Telecommunication Scholarship

Schlemmer Scholarship Fund

Stan Anderson Memorial Golf Scholarship Fund

Terry Schmidt Memorial Basketball Scholarship Fund

Waddell Scholarship Fund

Westview Scholarship Fund

Wolcott Mills PTO Scholastic Fund

Donor Advised Funds:

Donor Advised Funds enable donors to achieve their personal charitable goals. Individuals, families, organizations often establish these funds to direct grants to their favorite organization. These funds enable donors the ability to give like an independent foundation with the guidance and support of the Community Foundation.

DeWayne and Mertice Bontrager Memorial Endowment Fund

E. Marie Dwight Community Fund

George O. Witwer Advised Fund

Huggins Family Fund

Keith & Doreen Lambright Family Fund

Kerm Troyer Charitable Fund

Petersen Advised Family Fund

Zehr Family Fund

DONORS & MEMORIAL GIFTS

Individual Supporters

Angela Borck
Benjamin and Kalli Gulley
Breanna Bloom
Carl and Denise Scott
Carolyn Vogel
Carolyn Vogel
Charles and Debra Troyer
Christine Finland
David and Karen Kauffman
Dean and Angela Reeve
Deann Knepp
Deanna Chrisman
Don Wood
Dr. John and Debra Egli
Edgar and Jacqueline Evans
Fay Sturtz
Gary and Christie Nye
Gerald Lee
Harry Scott
Jean Pearson
Jeremy and Wendy Glick
Jim and Kathy Mills
John Day
John Todd
Judy Downen
Karesa Reynolds
Kathy Hopper
Ken and Kathy Sherry
Kent and Ruth Ihrle
Kevin and Carrie Lambricht

Larry and Shirley Strayer
Leon and Kathleen Baker
Leon Bontrager
Loren and Valerie Heinlen
Lou Appleman and Nancy Appleman
Lynn Weaver
Mark and Lisa Clemens
Max and Eleanor Bergman
Michael and Karen James
Michael and Suzanne Zehr
Miles and Judith Perkins
Nikkie Evans
Patrick and LaDonna Wiltshire
Ralph and Sherlyn Wilson
Richard and Gloria Fought
Richard Long
Robert Allread
Robert and Deborah Schlemmer
Ronald and Marcia Heller
Scott and Dana Reed
Steve and LuAnn Gage
Sue Keenan
Todd and Renea Boots
Trenia Bowen
Trinty Arver
Vincent and Ellen Heiny
William and Ruby Huggins
Zach and Miranda Bolla

Organizations

Aetna Foundation
Beauty and the Bull Bar and Grill
Big C Lumber
Burnworth-Zollars Automotive Group
Eta Zeta Chapter Delta Theta Tau Sorority
Extreme Graphics
F & N Woodworking, LLC
Farmers State Bank
Fruvip-May Funeral Home
Grate's Wrecker Service
Hardin Charitable Fund
Independent Colleges of Indiana
Interra Credit Union
Irvine Shade and Door Inc
Jerry's Standard
King Veterinary Clinic
LaGrange 4-H Swine Club
LaGrange County Golf, LLC
LaGrange County REMC
LaGrange County Treasurer
LaGrange De Lafayette Chapter NSDAR
Lake Area Veterinary Group
LaVanture Products
Lewis Quality Homes, Inc.
Lilly Endowment

Lolo's Lakeside Retreat LLC
Milford Township Trustee
Miller Poultry
Olive B. Cole Foundation
Pilgrim's Computer Service
Purdue University
River Woodworking, LLC
S & H Metal Products, Inc
Shipshe Automotive Service Inc.
Sons of the American Legion #215
Town of LaGrange
Wear Haus Designs
Weaver & Associates
Westview School Corporation

ACRES Nature Preservation & Education Fund
In Memory of Beverly J. Todd
Michelle Rheinheimer

Beverly J. Todd Memorial Scholarship
In Memory of Beverly J. Todd
Ada Wagler
Debra Notestine
Dee and Cheryl Anstett

Ernsberger Insurance Agency
Garry and Sharon Crawford
Gloria Sherwood
Greg and Pam Wingstrom
Henry Hendrix
Janet Moore
Jordan and Sara Spaw
K & T Lawn
Kathleen Wysong
Keith and Tracy Sample
Kevin and Karen Frey
Kirk and Lynne Perkins
Larry and Gloria Preston
Larry Helmer
Loreen Schlemmer
Louise Kehr-Smith
Loyd and Tammie LaLone
Lynn and Joan Tracey
Michael and Rebecca Slentz
Mr. and Mrs. Michael Long
Marilyn Lewis
Pamela Moore
Patricia Moore
R.D. and Julia Wolheter
R. Stan and Melanie Todd
Robert and Barbara Hedges
Robert and Phyllis Lung

Ronald Vaughn
Scott and Jaymee Monroe
Scott Fenton
Sue Ranzone
Susan Conner and Roger Melton
The Mane Event
Trenia Bowen
Vickie Smart
William and Mary Kribbs

Chase E. Scott Memorial Football Scholarship

In Memory of Harvey Lambricht

Bob and Carrie Schrock
Brad and Michelle Eash
Brian Scott
Cameron and Cari Miller
Charles Ashcraft
Cheryl Mishler
Chuck and Dawn Miller
Connie Whitcomb
Daniel and Sandra Baker
Darwin and Irene Lutz
Diane Cameron
Dorothy Yunker
Eberhard & Weimer, P.C.
Elvie and Clara Frey

Evelyn McMaster
Frederick and Barbara Hartz
Graydon and Marion Fox
Jana and Harold Reinking
Janice Bradley
Jean Bowen
Joe Feiertag
Jon and Elizabeth Oakley
Judge George and Patricia Brown
Julie Andrews
Julie Blair
Karen Reinking
Karyl Kreps
LaGrange County Chamber of Commerce
LaGrange County Republican Committee
Lakeland Title Company
Larry and Patricia Pichon
Larry and Shirley Strayer
Mark and Patricia Rodgers
Mary Beth Maskow
Mary Lamarr
Matt Thompson
Michael and Dee Helmkamp
Michael and Karen Strawser
Murlyn and Jane Myers

Natalie Glick
Norman and Linda Heign
Phillip and Rebecca Ramer
Robert and Norma Jean Tippy
Robert and Sandra Fanning
Robin and Linda Drumm
Sandy Sturtz-Ringler
Schrader Real Estate & Auction Co., Inc
Sheldon Fieberkorn
Steven and Jan Olinger
Terry and Judy Darr
Tevis Durbin
Todd Maynard
Tom and Sandra Bauermeister
Vic Brown
William Hedl

Girl Scouts of LaGrange County Scholarship

In Memory of Chuck Hopper

Kathy Hopper

Terry Schmidt Memorial Basketball Scholarship

In Memory of Terry Schmidt

Michelle Schmidt

Veterans Headstone Project Fund

In Memory of Steve Taylor

Roberta Frick
Carolyn Vogel

In Memory of Richard Dunkel

Burvel and Laura Lemings

Westview Scholarship Fund

In Memory of Dennis Sewell

Aaron Golden
Amy Lynne Fought
Anthony and Vickie Guyas
Brad and Lorriann Benson
Bradley Hardesty
Carolyn Miner
Charles Golden
Daniel Post
David Kelley and Julie Jensen-Kelly
Doretta Janowski
Gail Hooper
Gary Keister
Genevieve Schwartzenruber
Glenn Stoltzfus
James Byron

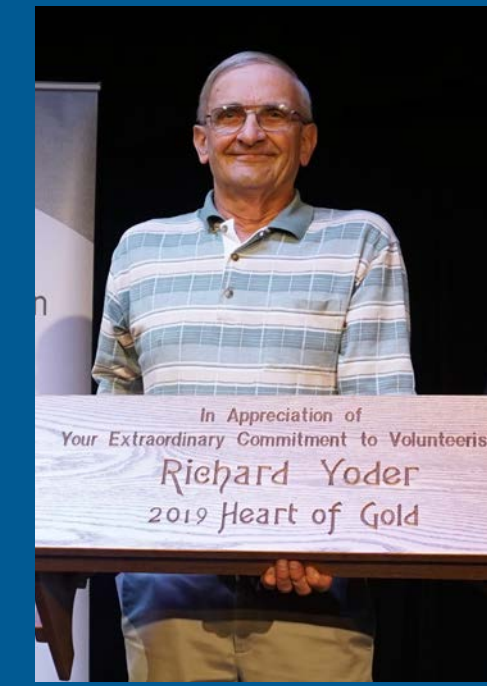
Jeffery and Kathy Whitmer
Judith Wise
Kate Kennedy
Kevin Lambricht
Keith and Beth Harp
Kris Simmons
Lee and Dorothy Bontrager
Lucille Rupe
Marie Work
Mary Alice Gran and Suellen Wilhelm
Michael Wilhelm
Mollie Ables
Merle and Nancy Tooker
Richard Lewton
Rebecca Unternaher and John Blosser
Paul Baker
Paul and Joanne Horst
Robert Kirsch

In Memory of Hunter Risk
New Life Fellowship



Heart of Gold Award Recipients

- 2010 – David Clark
- 2011 – Rhonda Bartlett
- 2012 – Colton Strawser
- 2013 – Randall Packer
- 2014 – Jack Miller
- 2015 – Sue Keenan
- 2016 – Steve Sherck
- 2017 – Kevin Lambright
- 2018 – Larry Strayer
- 2019 – Richard Yoder



“Richard has made a positive change in the hearts of many as he serves so generously.”

COMMITTED TO FEEDING THE HUNGRY

‘Basket’ volunteer Richard Yoder receives Heart of Gold Award

If you show up at the Clothes and Food Basket of LaGrange County, odds are you’ll see Richard Yoder. The largest food pantry in LaGrange County, The Clothes and Food Basket is one of the few pantries helping people in tough situations. You might find Richard stocking shelves or helping a family selecting their meals for the week, but he’s a mainstay at the nonprofit.

A lifetime farmer from Topeka, Richard has volunteered at the Clothes and Food Basket for the past 18 years. The organization is volunteer-based; there are no paid positions. Since 2009, Richard has served as the President of the Board of Directors. He’s helped “the Basket,” the organizational nickname used by the volunteers, to make big changes. Richard spearheaded the capital campaign to secure funds for the Basket’s new facility on Railroad Street in LaGrange. In one year, the Basket had a new place to call home, completely debt-free.

For his commitment and leadership to the organization, Richard received the LaGrange County Community Foundation’s 2019 Heart of Gold Award. Since 2010, the Community Foundation has honored an individual in LaGrange County who goes beyond the call and embraces a commitment to service. The award recognizes individuals in LaGrange County who have made an extraordinary commitment to volunteerism and serving others. The recipient is chosen based on qualities that reflect their selfless acts of kindness, even in challenging situations, to help individuals and the community take advantage of opportunities and create positive change.

His fellow volunteers at the Basket said it’s not uncommon to see him willing to help in any way he can. In his nomination, his fellow volunteers wrote, “Richard’s dedication and strong work ethic are shining examples of his leadership skill which guide the volunteers to graciously serve our

clients. Richard has made a positive change in the hearts of many as he serves so generously.”

The Community Foundation received five nominations for the tenth annual award. Richard and the 2019 nominees were all honored at the Heart of Gold reception in September 2019. His fellow nominees included: **Robinn Mitchell**, director of the LaGrange Bowen Center and LaGrange County Drug Court volunteer; **Carol Helmer**, Parkview LaGrange Gift Shop volunteer; and **Carrie Lambright**, American Cancer Society’s Road to Recovery Program volunteer.

With the receipt of the award, Richard had the honor of directing a \$1,000 grant to his favorite LaGrange County nonprofit. It was a simple guess to know what organization he wanted to help – right back to the Basket.



GRANTS

Community Impact Grants are awarded based on a competitive grant application process to nonprofit 501(c)(3) organizations. The Foundation seeks to fund innovative or creative projects with significant benefit to LaGrange County. These grants are made possible by donors who direct us to use their gifts wherever the needs are greatest. Nonprofit organizations serving LaGrange County are eligible to apply in six areas of interest: arts & culture, health & human services, recreation, community development, environment and education.

2019 Community Impact Grants

LaGrange County Courthouse Restoration and Historical Project	\$ 5,225
Veterans Headstone Project American Flag Holder Program	\$ 4,350
WNIT Education Counts Michiana	\$ 10,000
Science Central Science 4U Outreach Programming	\$ 5,000
Junior Achievement of Northern Indiana Junior Achievement Finance Park	\$ 4,725
Agape Childcare Ministry Materials & Toddler Playground	\$ 6,000
Trine University Walk into My Future Event	\$ 3,000
United Fund of LaGrange County United Way 211	\$ 2,979
Cancer Services of Northeast Indiana Client Advocate & Client Services	\$ 3,500
LaGrange County Parks Department Duff Lake Fen Development	\$ 15,000
Community Harvest Food Bank of Northeast Indiana LaGrange County Farm Wagon	\$ 5,000
Hoosiers Feeding the Hungry Meat Processing for Local Food Banks	\$ 5,000
LaGrange First Church of God LaGrange Night to Shine	\$ 2,000
ACRES Land Trust Massasauga Rattlesnake Habitat Recovery	\$ 3,000
LaGrange County Trails, Inc. Hawpatch Trail	\$ 25,000
Town of LaGrange Splash Pad and Inclusive Park	\$ 20,000
LaGrange County Public Library Genealogy Microfilm Reader Scanner Acquisition	\$ 4,057
LaGrange County Sheriff's Office Tactical Medical Bags	\$ 8,083
Community Health Clinic Community Outreach Education (Dental Health)	\$ 3,000

Total: **\$134,919**

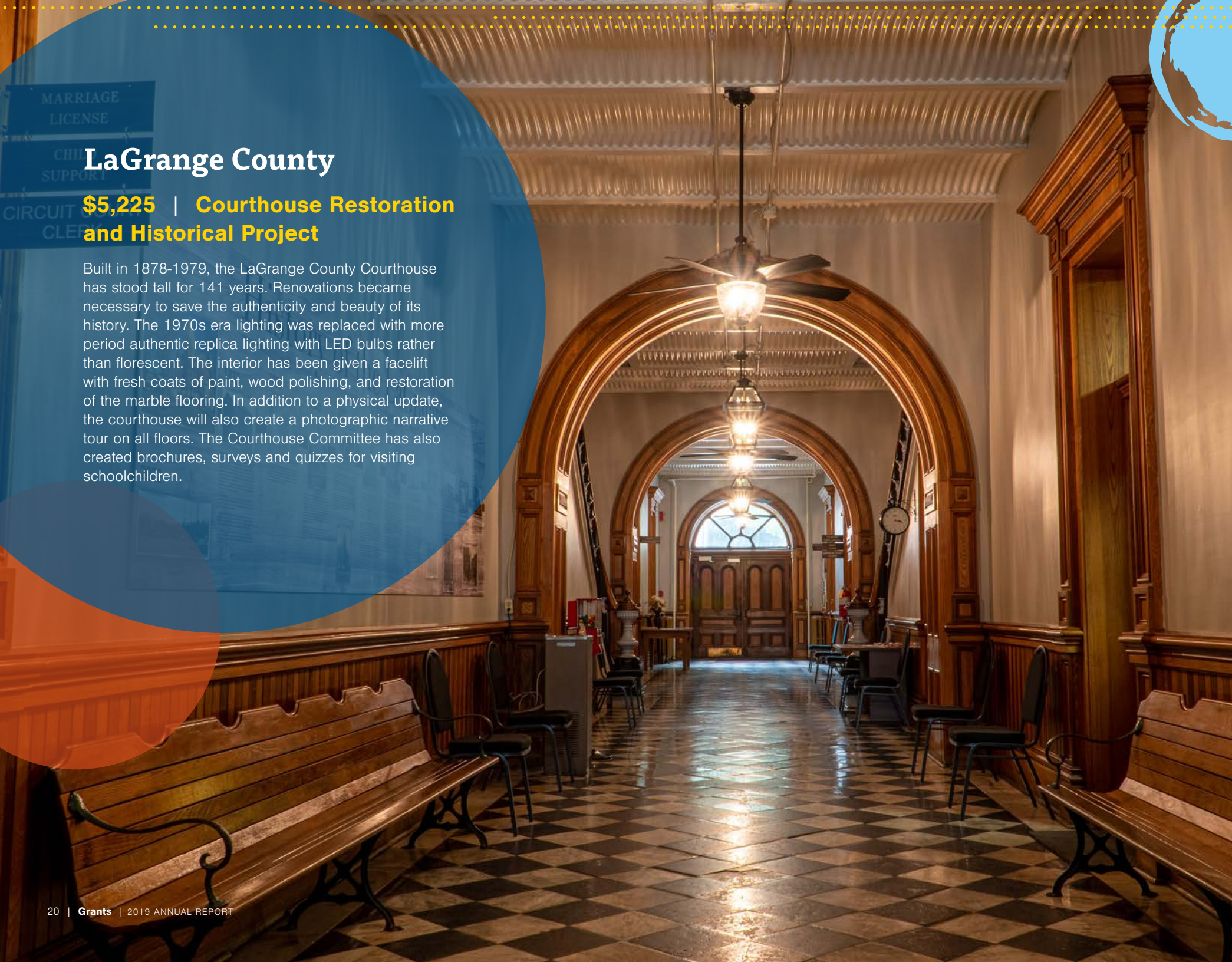
Agape Child Care Ministry

\$6,000 | Materials & Toddler Playground

Established in 1992, Agape Child Care Ministry in Stroh focuses on educating and building children's character. For the last 26 years the focus at Agape has remained the same: promote independence, concentration, order, respect, and the love of learning in the classroom and outdoors. Encouraging a child's natural development opens endless possibilities and promotes strong leaders.

The new toddler playground area provides infants and toddlers an age-appropriate space to play and interact. It is common to see the children laughing and playing as they roam through the new tunnel. With a limited budget, the addition of classroom materials helps Agape enhance its classroom education.





MARRIAGE
LICENSE

LaGrange County

\$5,225 | Courthouse Restoration and Historical Project

Built in 1878-1979, the LaGrange County Courthouse has stood tall for 141 years. Renovations became necessary to save the authenticity and beauty of its history. The 1970s era lighting was replaced with more period authentic replica lighting with LED bulbs rather than florescent. The interior has been given a facelift with fresh coats of paint, wood polishing, and restoration of the marble flooring. In addition to a physical update, the courthouse will also create a photographic narrative tour on all floors. The Courthouse Committee has also created brochures, surveys and quizzes for visiting schoolchildren.



Community Harvest Food Bank

\$5,000 | LaGrange County Farm Wagon

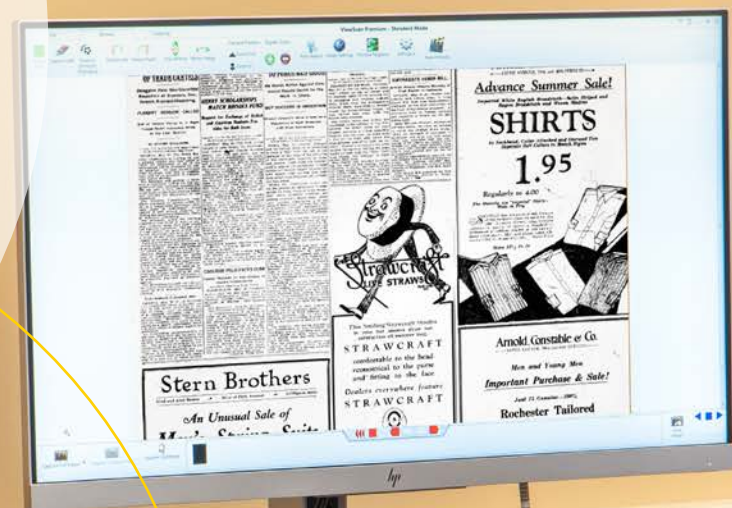
Founded in 1999, the Farm Wagon mobile pantry visits sites in Adams, Allen, DeKalb, Huntington, LaGrange, Noble, Steuben, Wells, and Whitley counties. They deliver over 150,000 pounds of fresh produce, dairy, and bread to low-income neighborhoods every week.

The Farm Wagon makes a weekly stop in Wolcottville at the former IGA parking lot. On average, 42 families receive 39 pounds of food, helping provide food security for those who are unable to make ends meet.

LaGrange County Public Library

\$4,057 | Microfilm Reader

The Genealogy Department at the LaGrange County Public Library offers the public free access to records dating back to 1830. From newspapers to census records, there is no lack of information to use to learn about the history of LaGrange County. With a new Microfilm Viewer-Scanner System, the Genealogy Department will be able to digitalize historical documents for easier and more convenient access.



YOUTH PHILANTHROPY

The LaGrange County Community Foundation's youth philanthropy program – LIFE – provides an opportunity for youth to gain experience in grantmaking, charitable giving, and volunteering.

The students engage in a variety of community projects and provide oversight of the LIFE funds at the Community Foundation. LIFE members represent each LaGrange County school corporation: Lakeland, Prairie Heights, and Westview. One student is selected from grades 8-12 to represent their school.

LIFE members review applications for education and youth projects serving LaGrange County and grant philanthropic dollars to organizations making an impact.

Biannually, LIFE hosts LEAP (Leaders Excited About Philanthropy), a one-day event introducing their peers to philanthropy, community service opportunities and leaderships skills.

2019 LIFE Grant Awards

Lakeland School Corporation LaGrange County College Visit Program	\$1,050
Reason 4 Hope Camp Hope	\$1,200
Lakeland FFA FFA Farm Committee Project	\$1,135
Westview High School Conference Table and Woodworking Project	\$2,270
Indiana Fellowship of Christian Athletes Training Funds	\$2,500
Topeka Elementary School Classroom License for Online Education	\$1,512
Westview High School Applied Skills Social and Life Skills Field Trips	\$1,500
Westview High School Applied Skills Art Project	\$850

SCHOLARSHIPS



Left to right: Allen Poe | Kent Yoder | April Chrisman | Karis Bachman | Madalyn Newby | Hannah Mast | Krista Yoder | Kole Miller

The LaGrange County Community Foundation administers scholarship funds established by individuals, families, corporations and organizations to assist graduating high school students and other students in pursuit of educational expenses. With more than 45 scholarship funds under management, LCCF enables students to achieve their educational goals. Each scholarship fund has its own individual criteria and requirements. Our volunteer Scholarship Advisory Committee reviews applications from qualified candidates and makes award recommendations to our Board of Directors. These awards are charitable grants that the recipient is not required to pay. Scholarships may be used for educational expenses such as tuition, books and fees.

2019 Community Scholarship Recipients

Amanda Lou Crotts Memorial Scholarship
Nathalie Ley
 University of Saint Francis | \$500

Brian J. Evans Memorial Scholarship
Kathryn Jennings
 Purdue University | \$500

Bruce Brown Memorial Scholarship
Faith Llera
 Trine University | \$400

Chase E. Scott Memorial Football Scholarship
Allen Poe
 Harding University | \$500

Craig D. and Ronda S. Neff Memorial Scholarship
Kent Yoder
 Huntington University | \$1,000

Ellsworth Fanning Memorial Scholarship
Anne Troyer
 Purdue University | \$1,000

Madison Kresse
 Purdue University | \$1,000

Farmwald Scholarship
Kent Yoder
 Huntington University | \$2,000

Florence E. and Virgil L. Hardin Memorial Scholarship
Bailey Schlabach
 Indiana University | \$500

George O. Witwer News-Sun Journalism Scholarship
April Chrisman
 Indiana University – Kokomo | \$1,000

Madilyn Kazmucha
 Liberty University | \$1,000

Holly Petersen Memorial Scholarship
Anne Troyer
 Purdue University | \$750

James F. Kalb Memorial Scholarship
Markus Miller
 Taylor University | \$1,000

J.O. Mory Company Scholarship
Allen Poe
 Harding University | \$500

Joseph Willard Memorial Scholarship
Catarina Staton
 Trine University | \$500

Judy Gage-Keenan Scholarship
Paige Willms
 University of Findlay | \$500

Keith and Arline Davis Memorial Scholarship
Lauryn Riegsecker
 Taylor University | \$500

Dennis Wingard
 Ball State University | \$500

Kerry Wilt-Spradlin Memorial Scholarship
LeAnna Miller
 Indiana University – South Bend | \$1,250

Madilyn Kazmucha
 Liberty University | \$1,250

LaGrange County Farm Bureau Coop Scholarship
Karis Bachman
 Berry College | \$500

Lambright Leadership Scholarship
Bailey Schlabach
 Indiana University | \$1,000

Allison Leszczynski
 University of Findlay College of Pharmacy | \$1,000

Caterina Staton
 Trine University | \$1,000

Madilyn Kazmucha
 Liberty University | \$1,000

LIFE Scholarship
Allison Leszczynski
 University of Findlay College of Pharmacy | \$400

Madalyn Newby
 Heidelberg University | \$400

Hannah Mast
 Grace College & Seminary | \$400

Lyle Smith Scholarship
Lauryn Riegsecker
 Taylor University | \$1,000

Mary E. McGawn Future Teacher Scholarship
Whittney Ray
 University of Saint Francis | \$1,000

Mattea Hope Holton Memorial Scholarship
Makayla Mast
 Ivy Tech | \$400

Melvin and Marjorie Bricker Memorial Scholarship
Caterina Staton
 Trine University | \$750

Madilyn Kazmucha
 Liberty University | \$750

Morgan Hunter Memorial Scholarship
Kent Yoder
 Huntington University | \$500

Ned Stump Memorial Scholarship
Anne Troyer
 Purdue University | \$400

Olive B. Cole Foundation Scholarship
Kent Yoder
 Huntington University | \$1,200

Bailey Schlabach
 Indiana University | \$1,200

Karis Bachman
 Berry College | \$1,200

Caterina Staton
 Trine University | \$1,200

Olivia Bay Lemings Memorial Scholarship
Makayla Mast
 Ivy Tech, | \$1,000

Paul and Marian Krebs Scholarship
Krista Yoder
 University of Saint Francis | \$1,500

Peggy Messer Memorial Scholarship
Nathalie Ley
 University of Saint Francis | \$300

Madalyn Newby
 Heidelberg University | \$300

Perkins Scholarship
Caterina Staton
 Trine University | \$1,000

Prairie Heights Band Scholarship
Chyann Carcione
 Indiana University | \$500

Prairie Heights Scholarship
Caterina Staton
 Trine University | \$1,000

Larissa Rigsby
 Ball State University | \$1,000

Harold Heingartner
 Trine University | \$1,000

Madalyn Newby
 Heidelberg University | \$1,000

Ray and Ruth Culp Memorial Scholarship
Bailey Schlabach
 Indiana University | \$1,000

Rheinheimer Scholarship
Kent Yoder
 Huntington University | \$1,000

Madison Kresse
 Purdue University | \$1,000

Schlemmer Scholarship
Allen Poe
 Harding University | \$500

Terry Schmidt Memorial Basketball Scholarship
Kole Miller
 Indiana University – South Bend | \$3,500

Waddell Scholarship
April Chrisman
 Indiana University – Kokomo | \$1,000

THE LEGACY SOCIETY

The Legacy Society of the LaGrange County Community Foundation recognizes generous individuals and couples who believe in impacting their community through a planned gift in their estate plans. For people who want to create a Legacy beyond their lifetime, the Legacy Society ensures donors that their charitable dollars are used the way they intended. Legacy Society members sustain our community for generations to come.

Katie Kirtley of Shilshewana joined the Legacy Society because of her desire to give back to causes that are important to her. With no immediate family, she wanted to leave behind a

gift toward something good. "I simply wanted to leave (my estate) to a good cause," Katie said.

Katie's childhood friend and financial advisor Mahlon Bontrager connected her to the Community Foundation. A former Board of Director and a member of the Finance Committee, Mahlon knew the Community Foundation could help Katie reach her charitable goals.

Having lost family members to cancer, it was important to help individuals and families in a similar situation. With her planned gift, Katie will honor her loved ones and create the Katie Kirtley Cancer Care Fund. She also plans to support the

Community Foundation's unrestricted grantmaking fund – the Caring Community Fund – which provides funding to local nonprofits.

Joining the Legacy Society is simple: donors include a gift to the Community Foundation in their will or trust, through gifts of life insurance or through retirement account assets. A gift of any size can help support a fund at the Community Foundation. Donors who include the Community Foundation in their estate plans, should notify the Foundation. The staff can help create a personalized giving plan, as detailed or general as needed, to ensure the philanthropic gift is meaningful.



"I simply wanted to leave (my estate) to a good cause."

—Katie Kirtley

Legacy Society Members

- Burvel and Laura Lemings
- Keith and Linda Stanton
- Jack Stark
- Katie Kirtley
- William and Ruby Huggins

BOARD OF DIRECTORS



Neal Wolheter
PRESIDENT



Crystal Leu
VICE PRESIDENT



Tony Bontrager
SECRETARY



Randy Fry
TREASURER



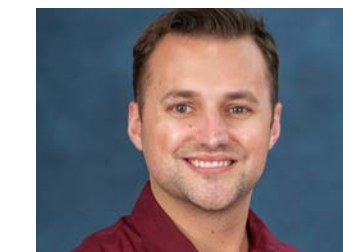
Renea Boots



George Brown



Lynn Weaver



Trevor Thain

STAFF



Octavia Yoder
EXECUTIVE DIRECTOR



Leanna Martin
GRANTS AND COMMUNICATIONS MANAGER



Laurie Sherck
OFFICE AND SCHOLARSHIP MANAGER

COMMITTEES

Executive Committee

Neal Wolheter
Crystal Leu
Tony Bontrager
Randy Fry

Investment Committee

George Brown, *Chair*
Dennis Kratz
Charlie Ashcraft
Bill Connelly
Mahlon Bontrager
Randy Fry

Audit Committee

Chuck Christner, *Chair*
Neal Wolheter
Crystal Leu
Tony Bontrager
Randy Fry
George Brown

Lilly Scholarship Advisory Committee

Renea Boots
Lyle Smith
Sara Patrick
George Brown
Tony Bontrager

Grants Advisory Committee

Lynn Bowen, *Chair*
Stan Clark
Alice Bremer
Randy Fry
Crystal Leu

Scholarship Advisory Committee

Connie Arnold
Mont Arnold
Sarah Bontrager
Marty Hayward
Ardala Hepler
Russell Hepler
Tammy Hoffelder
Kathy Hopper
Dianne Hostetler

Karen James
Amanda Jansen
Staci Kazamarek
Jim Keeslar
Allie Kresse
Crystal Leu
Riley Lewis
Andy Marshall
David McAlister

Monica Messer
Robinn Mitchell
Jennifer Mobley
Mary Moore-Bowers
Jenna Olds
Sara Patrick
Howard Petersen
Mary Petersen
Kari Reynolds

Brenda Rife
Kayla Robertson
Narissa Roth
Deb Schlemmer
Brittney Scori
Keely Shank
Beth Sherman
Lyle Smith
Nancy Stump

Shari Tarnow
Marlene Weaver
Patrick Wiltshire
Mimi Wismer
Eric Yordy
Diana Lahr

CONNECTING YOU TO OPPORTUNITIES

Every day you make the choice about how to use your time, talent, and resources. Our staff is here to help you as you navigate fulfilling a dream, a passion, or leaving your mark in your community. Our mission is to inspire and sustain generosity, leadership and service in LaGrange County. We connect people to charitable causes and are here to help you make a meaningful gift.

The power of the Community Foundation is the ability to bring together people and their resources to make a difference. You do not have to be a wealthy individual, nor do you need to start a fund to make a difference. Through our Caring Community Fund, \$50 gifts are pooled with \$100, \$1000 and \$5000 gifts, so that everyone plays a role in helping LaGrange County nonprofits change the lives of our community members.

If you would like more information about how LaGrange County Community Foundation can help you achieve more impact, greater purpose, and endless possibilities, contact us at 260.463.4363.

Why Give to the Community Foundation

- We work diligently to build strong relationships with the nonprofit community
- We serve as a facilitator between people and organizations to promote partnerships that will create vibrant communities
- We connect donors to projects and causes they value
- We provide professional expertise in managing and investing your gift to support long-term needs
- We provide flexibility in giving and can accept a wide variety of tax-deductible assets

Ways to Give

- Cash
- Life Insurance
- Appreciated assets such as stock or property
- Beneficiary designation on a retirement account or pension plan
- Estate gift (in your will)
- Private Foundation transfers

FINANCIAL POSITION

	Dec. 31, 2019	Dec. 31, 2018
ASSETS		
Cash and cash equivalents	\$ 273,000	\$ 728,341
Investments	16,927,290	14,263,135
Note receivable	182,157	192,637
Property and equipment, net	381,745	187,032
Other assets	7,550	5,356
Total assets	\$ 17,771,742	\$ 15,376,501
LIABILITIES AND NET ASSETS		
Liabilities:		
Accounts and other payables	\$ 20,022	\$ 18,127
Funds held for others	186,208	174,737
Total liabilities	\$ 206,230	192,864
Net assets:		
Without donor restrictions	\$ 7,534,455	\$ 6,109,023
With donor restrictions	10,031,057	9,074,614
Total net assets	17,565,512	15,183,637
Total liabilities and net assets	\$ 17,771,742	\$ 15,376,501

\$854,394 TOTAL CONTRIBUTIONS

\$456,654 GRANTS AWARDED

GRANTS BY PROGRAM

Community Development:	\$ 165,796
Scholarships:	\$ 116,713
Health and Emergency Relief:	\$ 110,033
Education:	\$ 64,112

3.3 + MILLION GRANTS AWARDED SINCE 2010

Charitable Assets

TODAY

\$17.8
MILLION

TOMORROW

\$624
THOUSAND
PERMANENT
GIFTS

FOREVER

\$14.6
MILLION
PERMANENTLY
ENDOWED

***Inspiring and sustaining
generosity, leadership and
service in LaGrange County.***



LCCF.NET | 260.463.4363